

DUPLICATE

14, 15 W-170  
I certify that the within instructions in  
this plan and the within instructions in  
any plan and the within instructions in the last  
Plan Office for the North Alberta Land  
Registry District at Edmonton, in the  
Province of Alberta, at 2:50 o'clock  
P.M. on the 13 day of Aug.  
A.L.S. Number 43772  
Book 158 Page 171  
S. J. Stewart

F.E.W. 1/4 W. 1/4 SEC. 29-47-1-3

72.7182  
154.8118  
243.15.62

FRACT. S.E. 1/4 SEC. 29-47-1-5

# PLAN SHOWING SUBDIVISION OF A PORTION OF THE FRACT. S.E. 1/4 SEC. 29-TR47-R.1-W. 5<sup>th</sup> MER. PIGEON LAKE SUNDANCE BEACH ALBERTA

SCALE: 1 INCH = 100 FEET

NOTE: PORTION TO BE REGISTERED IS OUTLINED IN RED, AND CONTAINS A 97 ACRES.  
IRON SURVEY POSTS FOUND, SHOWN THIS  
IRON SURVEY POSTS PLANTED, SHOWN THIS  
DISTANCES ARE IN FEET AND DECIMALS OF A FOOT.  
3/8" x 30" IRON BARS ARE PLANTED AT LOT CORNERS.



I, LAWRENCE O. OLSEN, of the CITY OF EDMONTON,  
ALBERTA, LAND SURVEYOR, THIS 14th DAY OF AUGUST,  
1958, IN WITNESS WHEREOF, I HAVE HEREBY SET  
MY HAND AND SEAL AT EDMONTON, ALBERTA, THIS  
14th DAY OF AUGUST, 1958.

Sworn before me at the  
CITY OF EDMONTON, IN THE  
PROVINCE OF ALBERTA, THIS  
14th DAY OF AUGUST, 1958.

Lawrence O. Olsen  
ALBERTA LAND SURVEYOR

Robt. Blument  
Notary Public  
IN AND FOR THE PROVINCE OF ALBERTA

I, LAWRENCE O. OLSEN, of the CITY OF EDMONTON,  
ALBERTA, LAND SURVEYOR, THIS 14th DAY OF AUGUST,  
1958, IN WITNESS WHEREOF, I HAVE HEREBY SET  
MY HAND AND SEAL AT EDMONTON, ALBERTA, THIS  
14th DAY OF AUGUST, 1958.

Sworn before me at the  
CITY OF EDMONTON, IN THE  
PROVINCE OF ALBERTA, THIS  
14th DAY OF AUGUST, 1958.

Lawrence O. Olsen  
ALBERTA LAND SURVEYOR

Robt. Blument  
Notary Public  
IN AND FOR THE PROVINCE OF ALBERTA

OWNERS: John House  
John House  
LAWFUL ATTORNEYS FOR JELCO MAY HOUSE

APPROVED subject to registration  
on or before September 30, 1958

C. W. Smith  
DIRECTOR OF SURVEYS

Edmonton August 14, 1958

APPROVED FOR  
EDMONTON DISTRICT PLANNING COMMISSION

McIntyre  
July 7, 1958

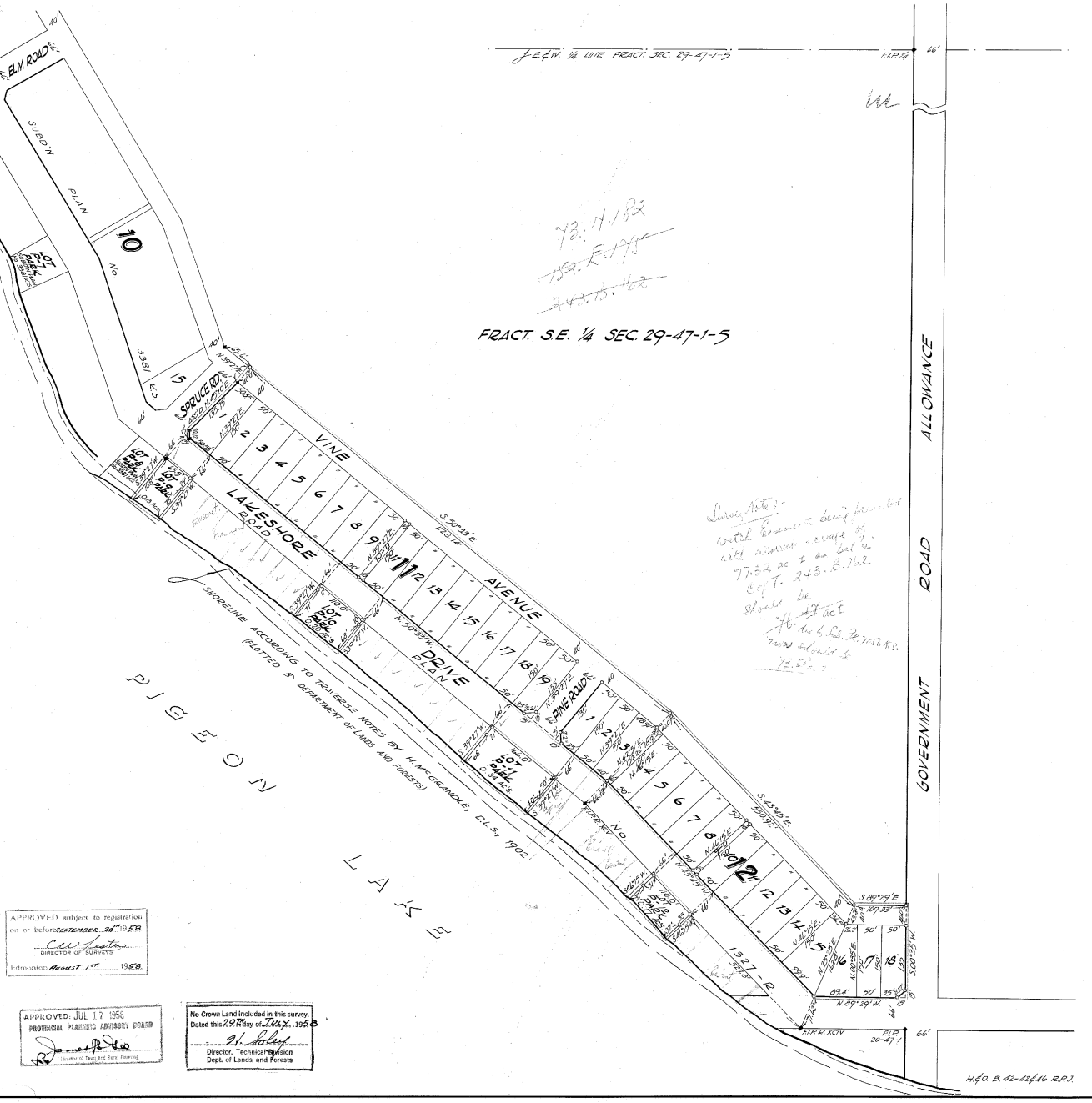
56-2-6

APPROVED JUL 17 1958  
PROVINCIAL PLANNING ADVISORY BOARD

James  
Chairman of the Board

No Crown Land Included in this survey.  
Dated this 29th day of July, 1958

A. J. Jolley  
Director, Technical Division  
Dept. of Lands and Forests



Survey Note:-  
Coral formation being planed  
with narrow escape of  
7.22 ac 1 in lot in  
S of T. 243. B. 162  
Should be  
1/4 of 1/4 of 1/4  
now should be  
15.51

ALLOWANCE  
ROAD  
GOVERNMENT